

THE MUNICIPALITY OF KILLARNEY - TURTLE MOUNTAIN

BY-LAW NO. 8-2010

Being a By-Law of the Municipality of Killarney - Turtle Mountain for closing a Public Reserve.

WHEREAS subsection 139(1) of the *Planning Act* provides, in part, as follows:

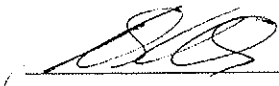
- 139(1) *Subject to subsection (2), a municipality may close public reserve land by*
- (a) *Passing a by-law to close the public reserve land;*
 - (b) *Obtaining written approval of the by-law from the minister; and*
 - (c) *Registering the approved by-law and, if required by the district registrar, a plan in the appropriate land titles office.*

AND WHEREAS the Municipality of Killarney – Turtle Mountain has determine that the following described public reserve is no longer required for public purposes; and that it is desirable and expedient and in the public interest that the same public reserve be closed:


NOW THEREFORE the Council of the Municipality of Killarney-Turtle Mountain enacts as follows:

1. That a portion of the Public Reserve, as shown on Plan 551 BLTO in the SE ¼ of 3-3-17WPM, be and the same is hereby closed.
2. That the Public Reserve, as shown on Plan 551 BLTO exc. all mines and minerals and other matters vested in the Crown (Manitoba) by The Crown Lands Act shall be transferred to the Municipality of Killarney – Turtle Mountain.
3. That the officers of the municipality are hereby authorized and directed to do all acts and execute all documents required for the purpose of implementing the said closing and transfer.
4. That this by-law shall be valid and in effect on, from and after the day it receives the approval of the Minister by written order.

DONE AND PASSED by the Council of the Municipality of Killarney-Turtle Mountain duly assembled in the Province of Manitoba this 23rd day of February, A.D., 2011.



Mayor

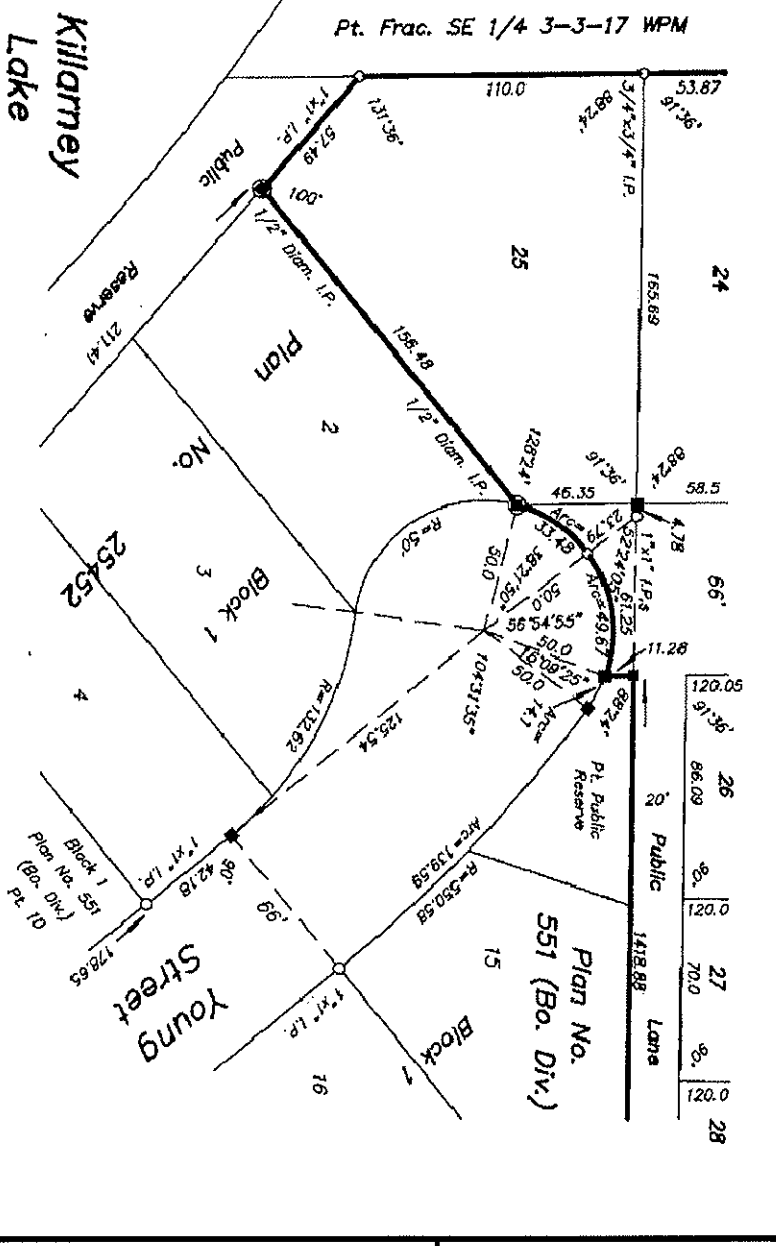


Chief Administrative Officer

Read a first time this 8th day of December, 2010.
Read a second time this 23rd day of January, 2011.
Read a third time this 9th day of February, 2011.

FOLLOWING THIRD READING...Pursuant to that same Procedures Manual, submit a signed and sealed copy of the By-law to the Community Planning Branch Regional Office for ministerial approval; written approval of the public reserve closing by-law, from the Minister of Local Government, is to be attached hereto as Schedule A.

Pt. Frac. SE 1/4 3-3-17 WPM



Lot No.	Area
24	155.69
25	110.0
26	86.09
27	1412.88
28	120.05